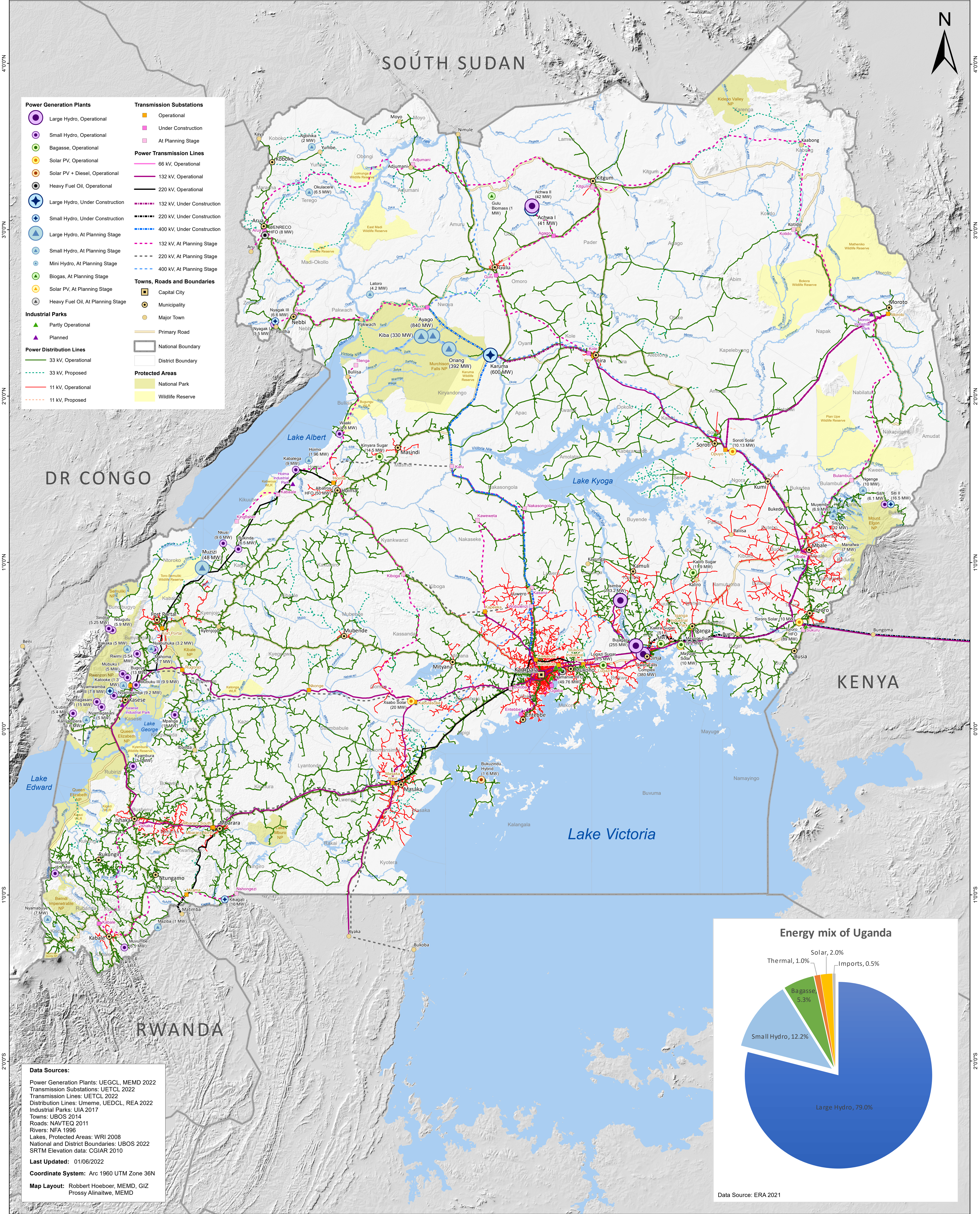
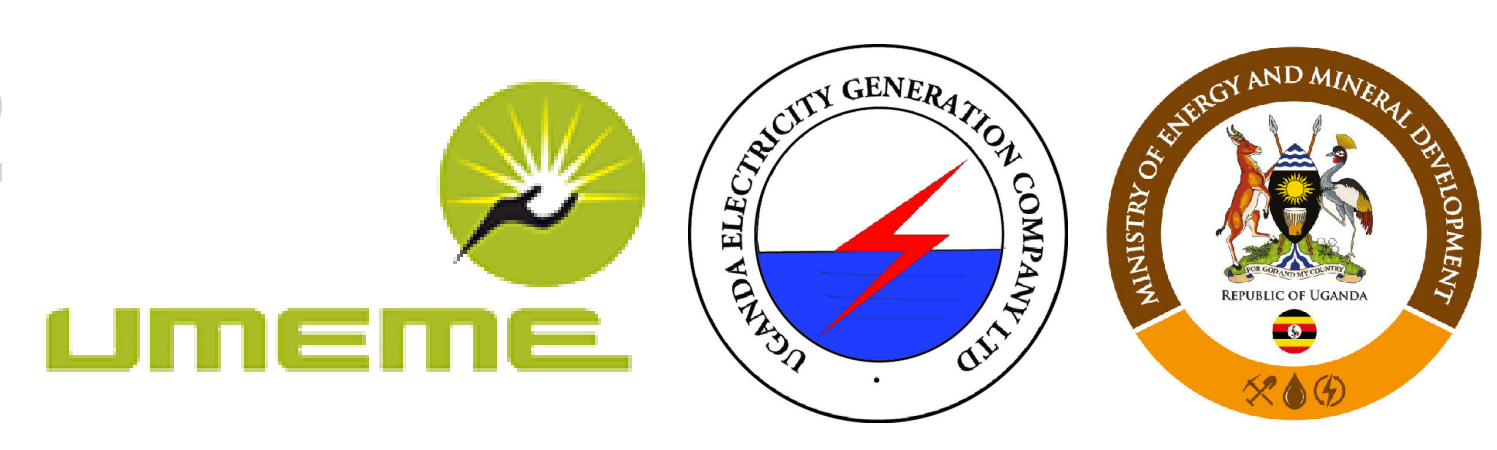


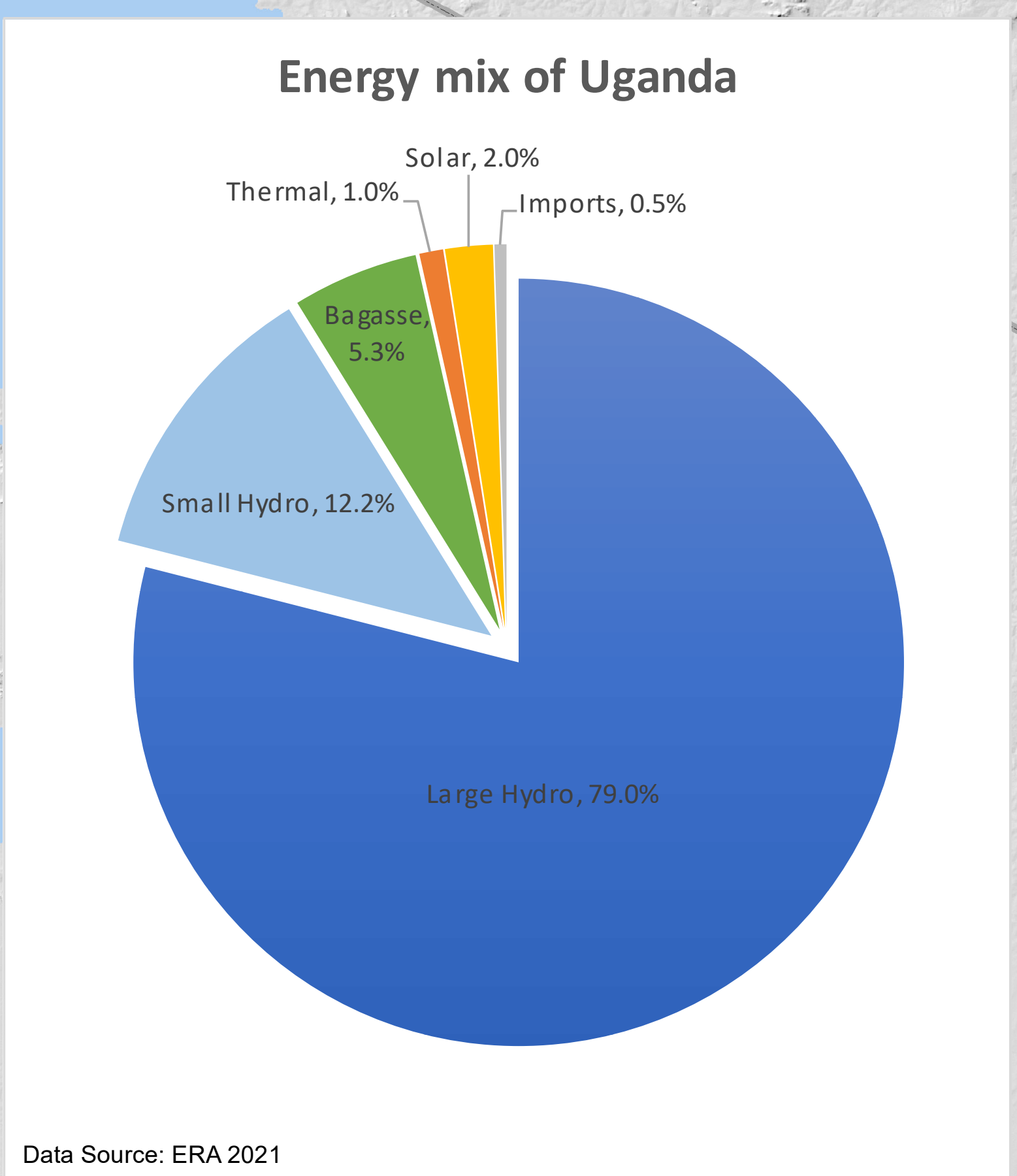


Status of Electrification in Uganda 2022

Published by the Energy Sector GIS Working Group



Power Generation Plants	Transmission Substations
Large Hydro, Operational	Operational
Small Hydro, Operational	Under Construction
Bagasse, Operational	At Planning Stage
Solar PV, Operational	
Solar PV + Diesel, Operational	
Heavy Fuel Oil, Operational	
Large Hydro, Under Construction	
Small Hydro, Under Construction	
Large Hydro, At Planning Stage	
Small Hydro, At Planning Stage	
Mini Hydro, At Planning Stage	
Biogas, At Planning Stage	
Solar PV, At Planning Stage	
Heavy Fuel Oil, At Planning Stage	
Industrial Parks	Power Transmission Lines
Partly Operational	66 kV, Operational
Planned	132 kV, Operational
	220 kV, Operational
	132 kV, Under Construction
	400 kV, Under Construction
	132 kV, At Planning Stage
	220 kV, At Planning Stage
	400 kV, At Planning Stage
Power Distribution Lines	Towns and Boundaries
33 kV, Operational	Capital City
33 kV, Proposed	Municipality
11 kV, Operational	Major Town
11 kV, Proposed	Primary Road
	National Boundary
	District Boundary
	Protected Areas
	National Park
	Wildlife Reserve



Data Sources:
 Power Generation Plants: UEGCL, MEMD 2022
 Transmission Substations: UETCL 2022
 Transmission Lines: UETCL 2022
 Distribution Lines: UMEME, UEDCL, REA 2022
 Industrial Parks: UIA 2017
 Towns: UBOS 2014
 Roads: NAVTEQ 2011
 Rivers: NFA 1996
 Lakes, Protected Areas: WRI 2008
 National and District Boundaries: UBOS 2022
 SRTM Elevation data: CGIAR 2010
Last Updated: 01/06/2022
Coordinate System: Arc 1960 UTM Zone 36N
Map Layout: Robbert Hoebber, MEMD, GIZ
 Prossy Alinaitwe, MEMD